

Short User Manual

TANDBERG MXP systems

- English

Software version F1
D13388.03
June 2006

This document is not to be reproduced in whole or in part without permission in writing from:

TANDBERG

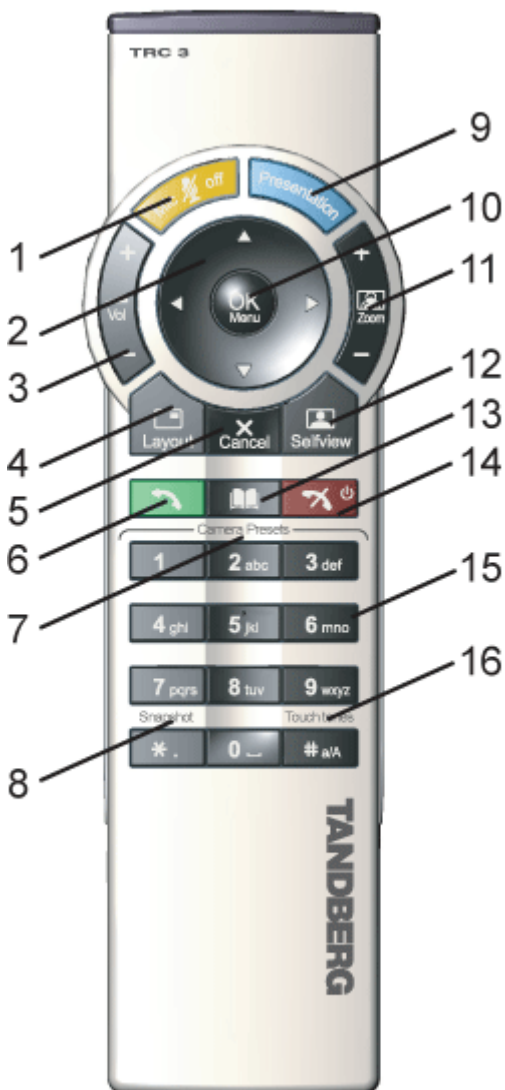
Table of Contents

General Use.....	3
The Remote Control.....	3
The Menu.....	4
On Screen Indicators.....	5
Handle Calls.....	6
Make a Call.....	6
Answer an Incoming Call.....	6
End Call.....	7
Phone Book.....	8
Move Camera.....	8
Presentation.....	9
Picture Layouts.....	10

General Use

The Remote Control

The system is controlled with a remote control. Think of the remote control as a mobile or cellular phone with number keys and call keys. Use the arrow keys and OK to navigate the menus. The system's most commonly used functions are also accessible directly from the remote control.



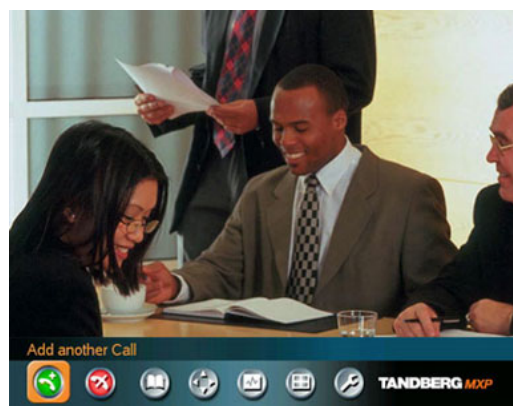
1. Mic Off turns your microphone on and off.
2. Arrow keys are used for navigation in the menu and for moving the camera when the menu is hidden.
3. Volume + and – adjusts the system volume.
4. The Layout key toggles between full screen and different picture layouts.
5. Cancel(X) takes you back one step in the menu system. Use Cancel(X) to delete characters in an input field.
6. Press the Call key to place a call.
7. Camera presets define specific camera positions when in a call. Press and hold a number key for 1 second to save the current camera position to that number key. To activate a preset whilst in a call, simply press and release that number key.
8. Snapshot takes a snapshot of your video. (Only while you are in a call)
9. The Presentation key switches to a predefined presentation source.
10. Press OK/Menu to show the menu and to select menu items.
11. Use Zoom + and – to zoom the camera in and out.
12. Selfview displays your outgoing video. Press Selfview again to turn selfview off.
13. Store and recall your video contacts via the system Phone Book for easy placement of calls.
14. Use the red End Call key to end the current call. Pressing this key when not in a call will place the system in Standby mode.
15. Number/Letter keys function in the same manner as with a mobile or cellular phone. Number key 1: - @ 1
16. Press Touch Tones when you are in a call and need to dial extension numbers (DTMF). Toggle between ABC and abc mode by pressing the # key. To switch between letter and 123 mode press the # key for 1 second.

The Menu

When the system is not in use, it is in standby mode. The screens are black. Wake up the system by picking up or pressing any key on the remote control.

When the system is switched on, you will see the welcome screen. The welcome screen presents the menu and displays your Main Camera image in the background (Main Camera is system default). Your dial in numbers and system name are displayed in the upper right corner. Your ISDN Number and IP Number are the numbers that your contacts need to place a video call to you.

The menu is the Interface you will use to control the system. The menu contains: Make a Call, Standby, Phone Book, Move Camera, Presentation, MultiSite Services and Control Panel. When you are in a call, the buttons 'Add Another Call' and 'End Call' will be available via the red and green buttons (see pictures below).



The menu outside a call and in a call.

When you are in a call, the menu automatically times out after 15 seconds. Press OK/Menu on remote control to bring it back. You can hide the menu manually by pressing Cancel (X).

If the system does not respond:

- Make sure that the system is switched. Please check the On/Off switch located at the rear of the Codec (see figure).
- Verify that the monitor is switched on. To switch the monitor on you normally push the power button on the front of the monitor (depending on monitor type).



On Screen Indicators

The system has a number of icons signalling different settings:



Volume Off

This indicator is shown when the volume is turned off. Press Volume + to turn the volume back on.



Microphone Off

This indicator is shown when the microphone is turned off. The indicator will start to flash if audio is detected in the room during a call and the microphone is turned off. Press the Mic off button again to turn the microphone back on.

Be aware that many calls can be connected automatically when Mic is Off. The icon will start to flash when you start speaking. Remember to turn the microphone on before a meeting.



Secure Conference, AES

This double padlock indicator is shown when AES encryption (Encrypted Conference) is active.



Secure Conference, DES

This Padlock indicator is shown when DES encryption (Secure Conference) is active.



Not Secure Conference

This open padlock indicator is shown during the initialization phase for encryption. During this period the call is not secure.



Floor

This indicator is shown when you are displayed in full screen in a MultiSite conference.

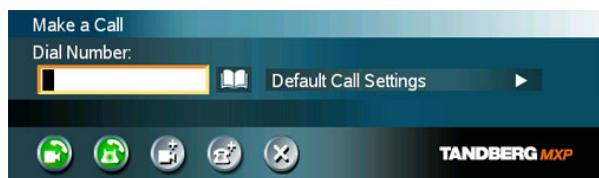
Handle Calls

Make a Call

To make a call, choose Make a Call from the main menu. If you are already in a call, choose Add another Call to call another participant (if your system has MultiSite capabilities). Pressing the green key on the remote has the same effect as pressing the green button in the menu. You can enter a number manually in the input field or select the book icon to select a contact from the phone book.

The TANDBERG system can place both video calls and telephone calls. For video calls, choose Place Video Call in the call menu. For telephone calls, choose Place Telephone Call. Call Settings specifies the quality of the call. In most cases you can leave call settings unchanged.

If your TANDBERG system has MultiSite capabilities, you can call several participants at the same time. Choose Add Video Call or Add Telephone Call in the call menu and more dial fields will appear.



Answer an Incoming Call

You can receive calls anytime, even when the system is in standby mode. Remember to ensure the system is switched on using the On/Off switch located at the rear of the Codec.

How to answer an incoming call:

1. To accept an incoming call, press OK or the green key on the remote control.
2. Press the red key on the remote control to reject the incoming call.
3. If you don't want any incoming calls, choose Do Not Disturb. If Do Not Disturb is on, the system will automatically reject all incoming calls.

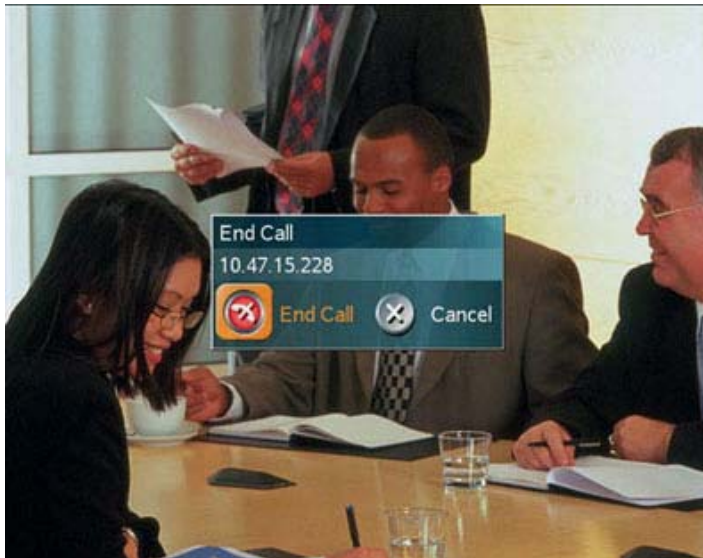


If Auto Answer is set to On, an incoming call will connect automatically. You can set Auto Answer on or off in Control Panel - Administrator Settings - General.

End Call

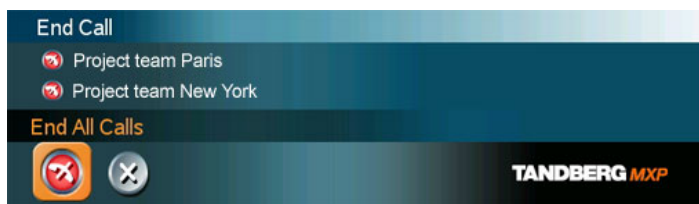
How to end a call:

1. Press the red End Call key on the remote control or select End Call from the menu.
2. Press once again the red End Call key on the remote control or press the OK-key to confirm that the call is to be ended.



How to end a MultiSite call:

1. Press the red End Call key on the remote control or select End Call from the menu.
2. A list of participants appears allowing you to end each separate call. Select a participant and press OK or the red key.
3. Press End All Calls if you want to end the whole conference.



Note that switching off the monitor(s) will not end a call. To end a call you must press the red End Call key on the remote control or select End Call from the menu.

Phone Book

Phone Book stores up to 200 contacts including the last numbers dialed. Using the Phone Book is timesaving and can reduce the amount of false calls due to wrong numbers or call settings.

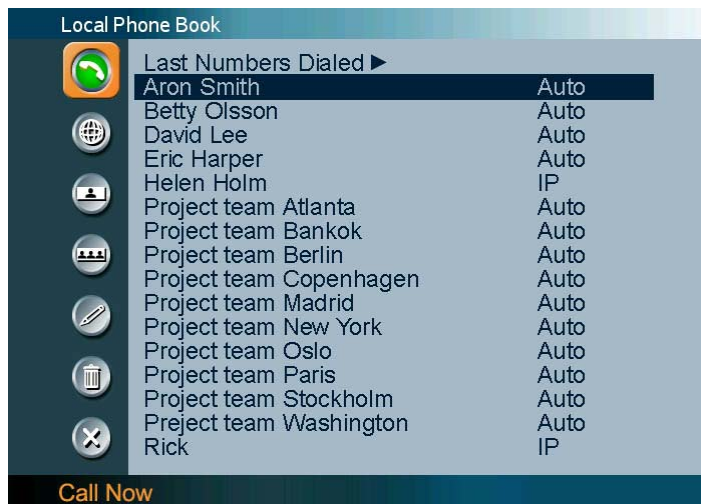
The contacts are sorted alphabetically. Navigate the phone book with arrow keys or letter keys, searching on the first letter (like on a mobile/cellular phone). Press arrow to the left to select a button. You will see that the last selected contact will be marked. Edit and Delete will apply to the marked contact.

The last calls placed from the system are displayed under the Last Numbers Dialed entry in the Phone Book.

Choose MultiSite to save a group of contacts, making it quicker to place a MultiSite call (if your system has MultiSite capabilities).

How to make a call using Phone Book:

1. Press Phone Book on the remote control or from the menu.
2. Choose a contact using arrow keys or letter keys.
3. Press OK to select the contact. This will take you to the Call menu, where you may edit the number or call settings before you place the call. Alternatively press the green Call key on the remote control to call directly.



Move Camera

There are several ways to move the camera:

- Choose Move Camera from the main menu. Use the arrow keys on the remote control to pan and tilt the camera. Press OK when done.
- When the menu is closed the arrow keys will work on the camera. Hide the menu with the Cancel (X) key and adjust the camera with the arrow keys.
- Use Camera Presets. Press a number and the camera will move to a predefined position (when you are in a call).
- Use Automatic Camera Tracking. (See TANDBERG user manual)
- Use the TANDBERG Tracker. (See separate documentation)

Presentation

The Presentation functionality enables you to show PC, DocCam (Document Camera), VCR, AUX and VNC sources in addition to your Main Camera. This is perfect for meetings where you would like to show a PowerPoint presentation for instance. You can even use arrow keys up and down on the remote control to activate Page Up/Down on the PC. (This only applies when using VNC).

Use Presentation outside a call to make a local presentation for the people in your own meeting room. Use Presentation when you are in a call to make a presentation for the far end as well.

The quickest way to show a presentation is to use the presentation key on the remote control. The presentation key shows a predefined video source, PC is default. It is possible to change the presentation source in Control Panel - Administrator Settings - Presentations Settings.

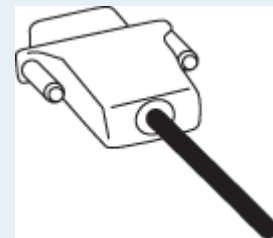
Choose Presentation from the main menu if you want to select a video source manually. The Presentation menu offers you all available video sources: Main Camera, PC, DocCam, VCR, AUX and VNC.



Live PC images

When showing a presentation from your laptop PC, remember to connect your PC to the video system with a VGA cable. Make sure that your PC transmits the image to the VGA Output. On most laptop PCs you must press a special key combination to switch the image.

Note: The image will appear smoother on the system if your presentation is already displaying in full screen on your PC prior to connecting your PC to the video system.



VGA Cable

Picture Layouts

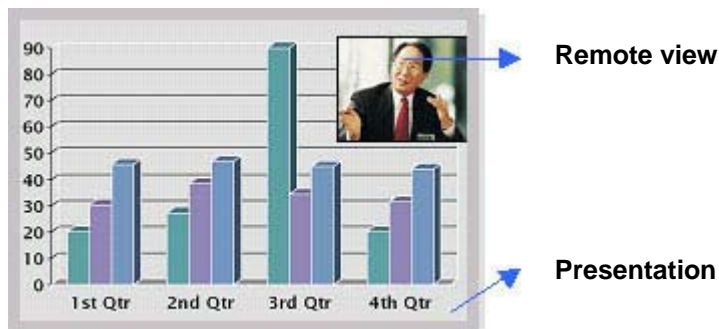
The Layout key on the remote control has two behaviours depending on the Picture Layout setting in Administrator Settings (see Control Panel - Administrator Settings – General – Screen Settings). It can provide either a Picture in Picture (PIP) or a Picture outside Picture (POP). POP is recommended for wide screens.

Picture in Picture

With Picture in Picture (PIP), the layout key makes it possible to see an extra picture in a smaller view. PIP will always appear on the main monitor. Automatic PIP is the system's default setting. That means that you will automatically show Picture in Picture when it is suitable (see Control Panel - Administrator Settings - Presentation Settings).

How to use Layout with Picture in Picture:

- Press Layout key once to bring up a picture in picture.
- Press Layout key three times to move it around in the corners of the screen.
- The fourth time you press Layout key, the small picture will hide and bring you back to full screen.
- Press and hold the Layout key for 1 second. This will hide the small picture from any position.



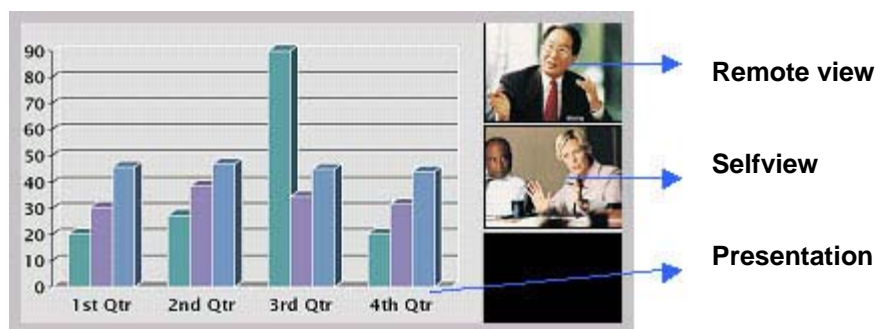
Example of Picture in Picture

Picture outside Picture (for wide screens)

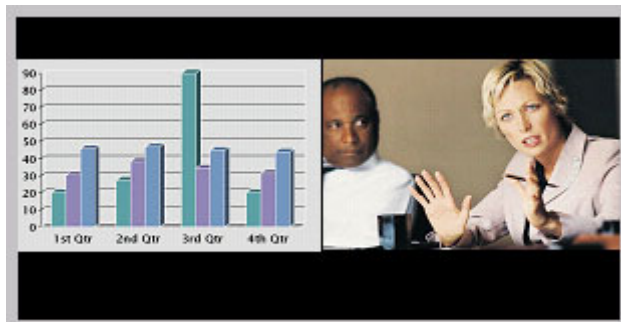
With Picture outside Picture (POP), pressing the Layout key on the remote control will bring up the different compositions of the pictures that are optimized for wide screens. Picture outside Picture is recommended with wide screen monitor systems.

How to use Layout (Picture outside Picture):

- Press Layout once to get the 1+3 layout. You see a big far end picture and a smaller picture of yourself in the upper right corner. If you use Duo Video, you see a big picture of the Duo Video and small pictures of the far end and yourself.
- Press Layout key again to get the side-by-side layout (1+1). You see two equally big images of the far end and yourself.
- The third time you press Layout key you go back to normal full screen view.
- Press and hold Layout key for 1 second. This will bring you back to full screen anytime.



Example of Picture outside Picture



Example of Side by Side



Example of Full screen view